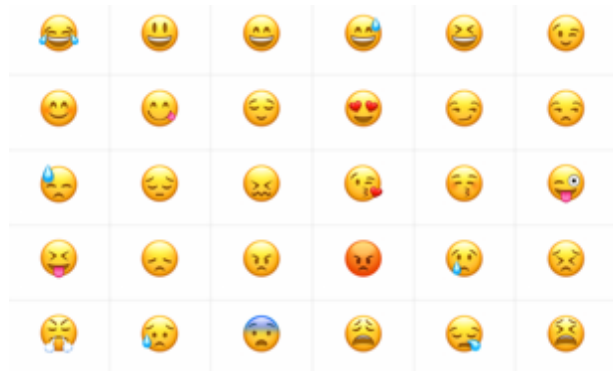


## Activity #1 The Famous Smiley FACE!

A Graphic Artist named Harvey Ball created the Smiley Face in 1963 in Worcester, Massachusetts. Worcester is about 50 miles from SPRINGFIELD. ☺ He created it as a SYMBOL TO HELP PEOPLE FEEL HAPPIER at a company he worked for.

- Harvey Ball's Creation is known around the world and so many people use it and EMOJI's!

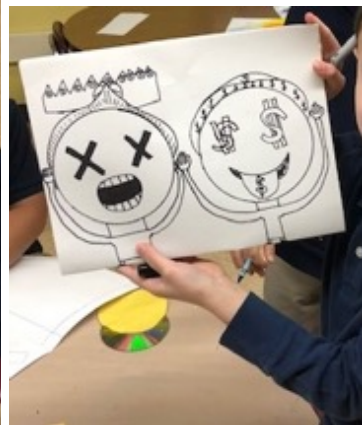
<https://www.smithsonianmag.com/arts-culture/who-really-invented-the-smiley-face-2058483/>



**All these EMOJI'S are DESIGNS that were inspired by the ORIGINAL SMILEY FACE!**

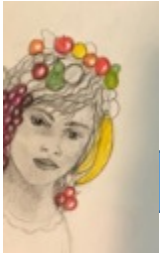
○ **THEY ARE VERY SIMPLE DESIGNS** that we often don't realize are a big part of our everyday lives. **Do you think Harvey Ball thought his simple design would become so FAMOUS?**

- Use a pencil to draw CIRCLES.
- If you have a circle shape like a blank music CD or a cup you can make lots of circles on your paper.
- Draw eyes, mouths, and anything else you want inside and around the circles.

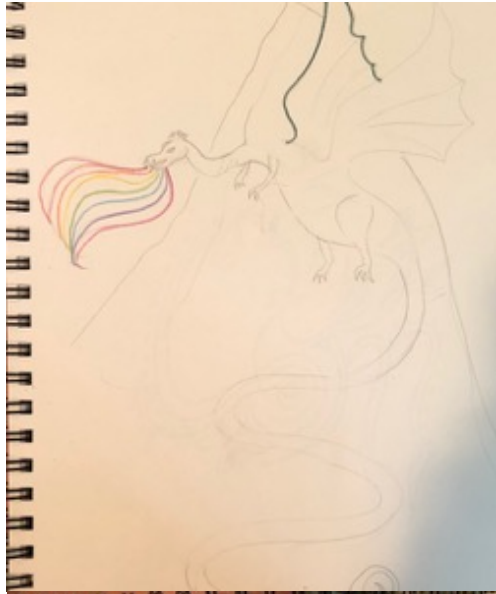


The examples to the left were created by my second grade students. **Have fun with this!**

**Activity #2** Lots of IDEAS & CHOICES 😊 for you to draw!



Draw something other than gold at the end of a rainbow	Draw the strangest pair of glasses you can imagine	Draw a flamingo doing ballet	Draw a design for a \$3 bill	Draw a plant with a face
I TRIED THE DRAGON ONE, SEE BELOW				
Draw a troll riding a unicorn	Draw a hot dog flying	Draw a person with fruit for hair	Draw a dragon breathing rainbows	Draw your teacher as a zombie
AND A PERSON WITH FRUIT FOR HAIR 😊				
Draw yourself with a superpower	Draw a fish swimming in something other than water	FREE SPACE	Draw a cat playing a sport	Draw a walking taco
Draw a llama surfing	Draw a pair of shoes made out of flowers	Draw a Pop Tart lifting weights	Draw an ice cream cone eating a Popsicle	Draw a dinosaur crying
Draw an alien driving a car	Draw a donut riding a skateboard	Draw a crying crayon	Draw a food eating another food	Draw a can of soda pouring out rainbows



## Activity #3 Abstract Art by Wassily Kandinsky

Wassily Kandinsky is one of the most famous artists in the world!

His artwork is made up of lines, shapes and colors that do not represent anything in particular.

Kandinsky had a genetic condition called **Synaesthesia**, which is mixing up of his senses. **This allowed him to SEE sounds and HEAR colors!**

• Wassily would often paint while listening to music. Some of his paintings are called Compositions just like musicians compose or write music. Take a look at his artworks and you may see lines and shapes that look like musical notes.

**This painting is called Composition 8.**



**This painting called Black and Violet.**



○ What kind of music do you think he was listening to while painting?

■ Was the music fast or slow?

■ Was the music loud or soft and quiet?

**Click on the Video below. It is very clever and fun to watch and listen to.**

<https://www.youtube.com/watch?v=EvS6jEcpBtg>



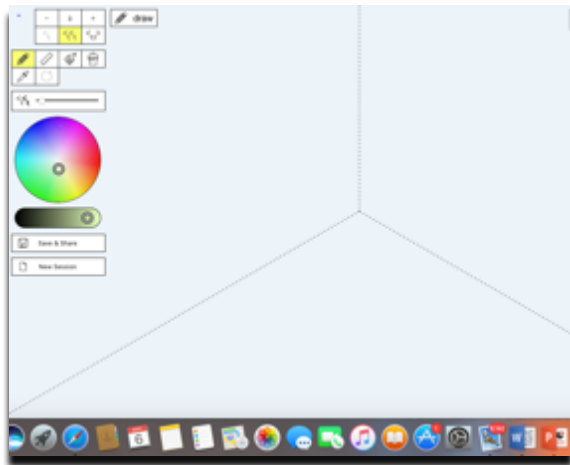
**Create an artwork!**

- Use pencil to draw your shapes.
- Draw some large, medium and small shapes.
- Draw shapes inside shapes and or overlapping.
- Add lines and patterns.


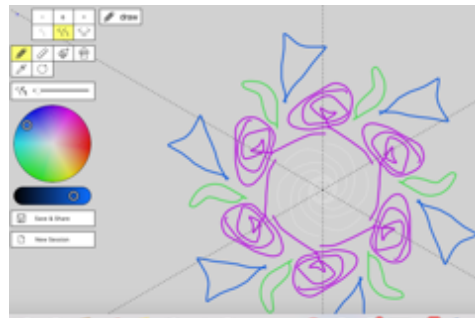
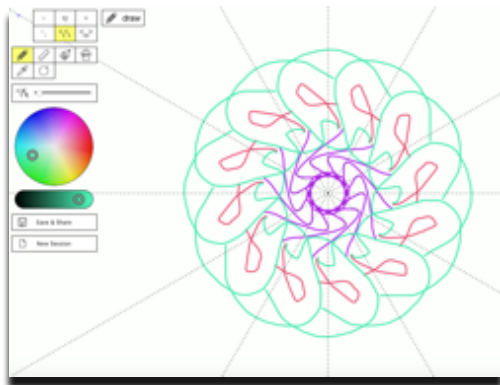
MAYBE YOU ADD OTHER DRAWINGS LIKE Flowers, Butterflies, Boats, Bugs, What else can you ADD? **Have fun with this!**

# Activity #4 Computer Design MANDALAS

<https://www.mandalagaba.com/#mGa2il>



Click on the Website to your left. This opens an easy site to use and create FUN, COLORFUL, AND VERY AMAZING Mandala DESIGNS. Please try this and send me one or two of your final ideas. There is a simple way to do this on the site.



**Mandalas are found across all cultures.**

*Here are some examples:*

- Celtic spirals and knot work
- Christianity – rose windows, rosary, halos
- Chinese Yin and Yang symbol
- Hindu Yantras
- Labyrinths
- Native American – medicine wheel, dream catchers, Native American shields
- Navajo Sand Paintings
- Tibetan Sand Mandalas
- Calendars follow cycles of time. I.e., Gregorian, Astrological and Mayan calendars.

## DRAWING mandalas

Please upload on TEAMS or email images that you have created. This website is fun and easy to use!

Enjoy 😊

Miss you very much! Be creative, stay healthy &

**STRONG! Mrs. Moore** My email is: [mooreco@springfieldpublicschools.com](mailto:mooreco@springfieldpublicschools.com)